

# BROOKLYN

by **EAGLESTONE**  
LUXEMBOURG

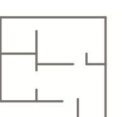
## APPARTEMENT B3-00-APT-002



B3



RDC



118.56m<sup>2</sup>



3

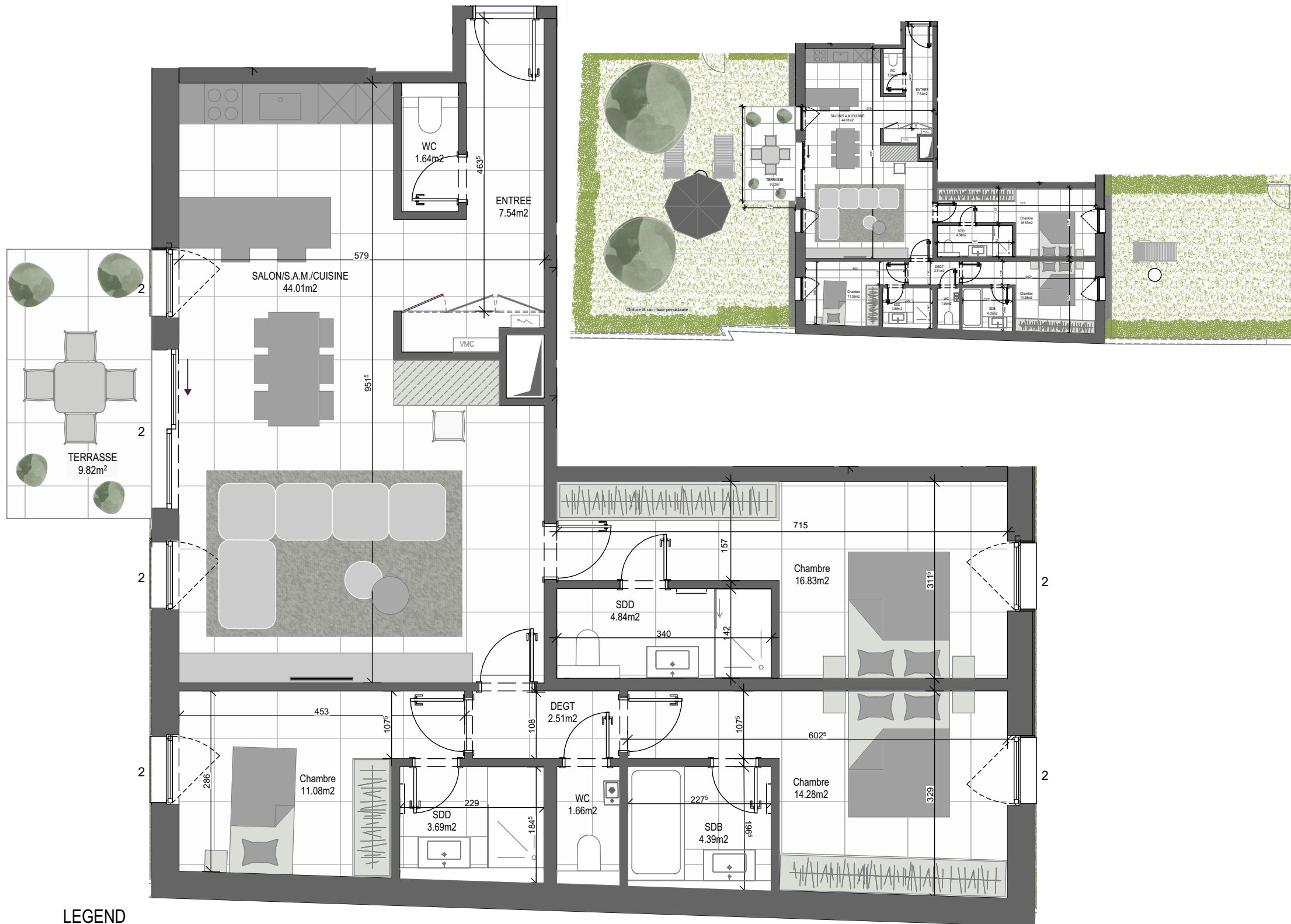
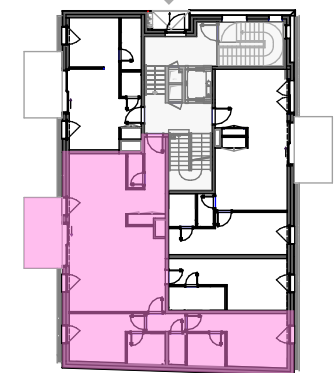


3



9.19m<sup>2</sup>+(\*)118.57m<sup>2</sup>+(\*)59.63m<sup>2</sup>

## SITUATION

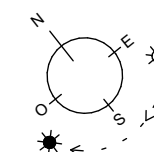


## LEGEND

	Tiled floor		Exterior tiled floor
	Suspended ceiling		Ground

- 0 No solar shading
- 1 Pre -installation solar shading
- 2 Solar shading

Echelle : 1/70



## OBSERVATIONS :

- Measurements are given on a gross basis, without finishing work. Some measurements and drawings can be subject to changes during construction.
- Each difference being more or less and within acceptable tolerances, will mean a loss of profit to the buyer without price adjustments.
- Changes may be made to this plan according to the realization requirements.
- The furniture and the flooring layout are given only as an example.
- Full information about the radiators, electrical and ventilation equipment will be provided during construction.
- The measurements of the radiators and the location of the false ceiling are given only as an example.
- The kitchen layout and technical equipment sizes are provided for information only and are not contractual. Specific documents can be provided during construction

**EAGLESTONE**  
LUXEMBOURG

**m<sup>2</sup>**  
ARCHITECTES