

BROOKLYN

by  **EAGLESTONE**
LUXEMBOURG

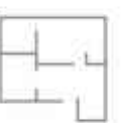
APPARTEMENT B3-02-APT-010



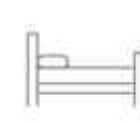
B3



ETAGE 2



47.96m²



1

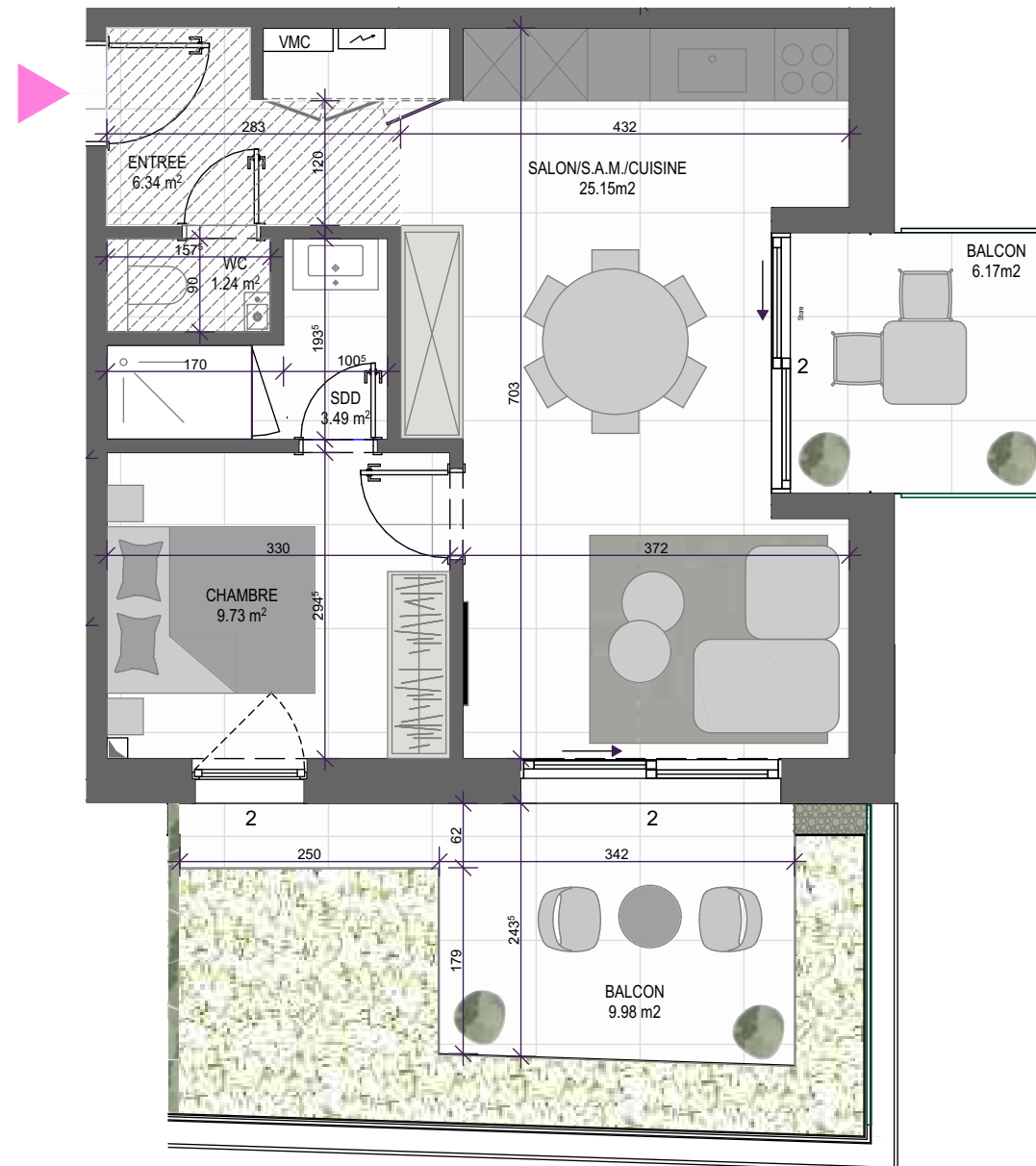
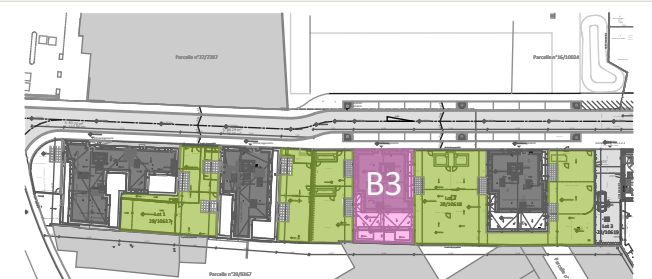
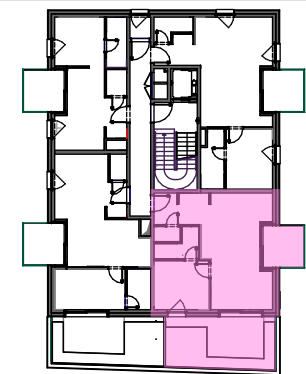


1



9.98m²+(*)6.17m²

SITUATION



LEGEND



Tiled floor



Suspended ceiling



Exterior tiled floor



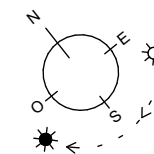
Ground

0 No solar shading

1 Pre -installation solar shading

2 Solar shading

Echelle : 1/70



* TERRASSE : Droit de jouissance privatif en copropriété.

OBSERVATIONS :

- Measurements are given on a gross basis, without finishing work. Some measurements and drawings can be subject to changes during construction.
- Each difference being more or less and within acceptable tolerances, will mean a loss of profit to the buyer without price adjustments.
- Changes may be made to this plan according to the realization requirements.

- The furniture and the flooring layout are given only as an example.
- Full information about the radiators, electrical and ventilation equipment will be provided during construction.
- The measurements of the radiators and the location of the false ceiling are given only as an example.

- The kitchen layout and technical equipment sizes are provided for information only and are not contractual. Specific documents can be provided during construction

 **EAGLESTONE**
LUXEMBOURG

 **m3**
ARCHITECTES